

# Model GPD

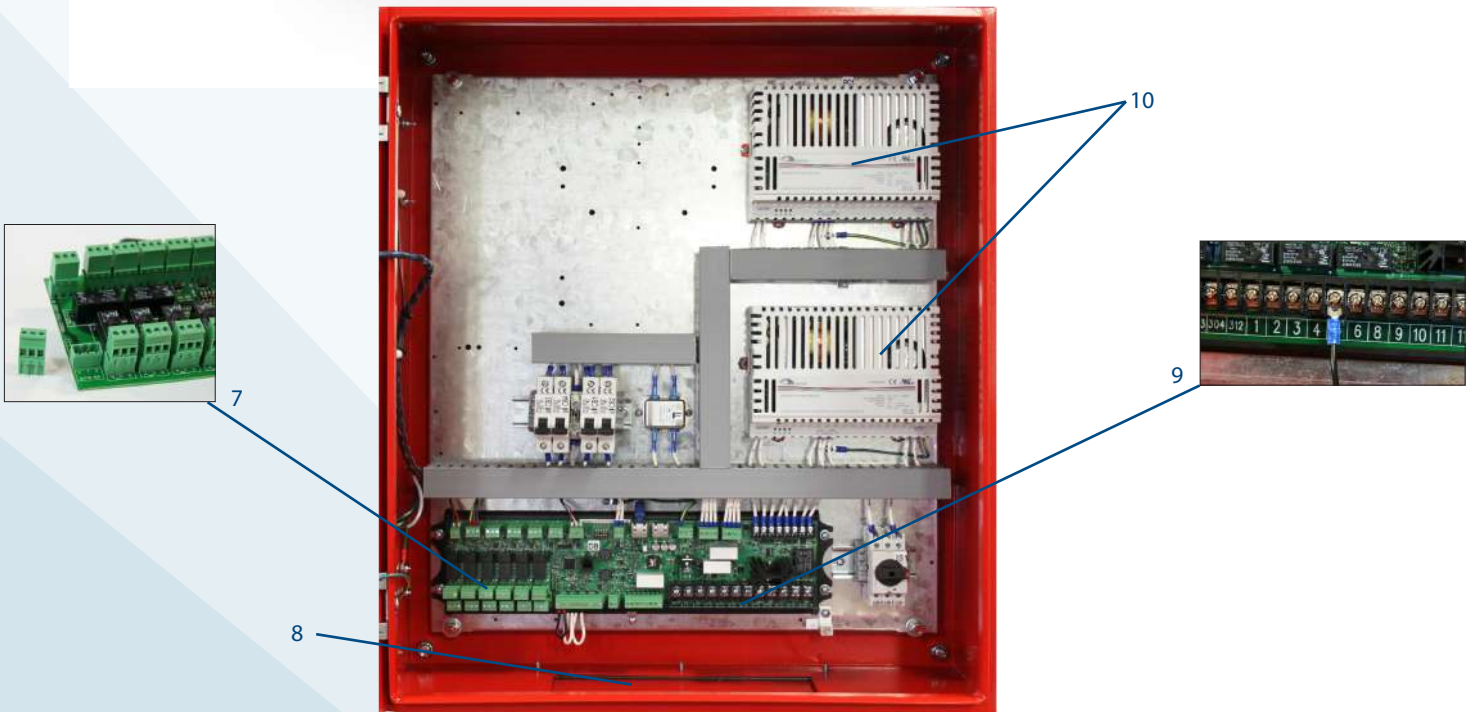
## Diesel Engine Fire Pump Controllers

### Standard Features

- ViZiTouch V2 operator interface
- NEMA 2 assembly
- Pressure and event recorder
- Battery voltage and amperage display
- Run Test push button
- HAND - OFF - AUTO selector switch
- Manual crank pushbuttons (2)
- Stop pushbutton
- Remote start / deluge valve start provision
- Pressure transducer and run test solenoid valve externally mounted
- Gland plate
- Audible alarm
- Alarm contacts for remote indication
- Weekly exercise programmable time clock
- Crank cycle
- Programmable automatic shutdown (minimum run timer)
- Programmable sequential start timer (delay start timer)



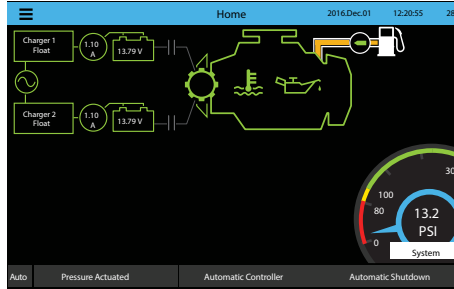
1. Alarm bell
2. Externally mounted pressure transducer and run test solenoid valve with protective cover
3. Key lock
4. ViZiTouch V2 operator interface
5. Exterior USB Port
6. HAND-OFF-AUTO selector switch
7. Remote alarm contacts with removable terminals
8. Gland Plate
9. Automotive type engine connections
10. Battery chargers





## HOME SCREEN

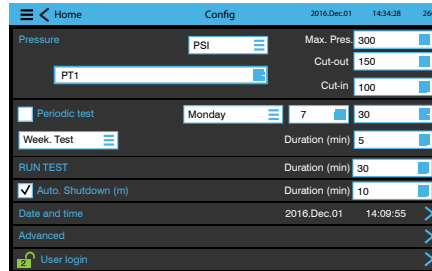
### Diesel Fire Pump Controller



## ON-SCREEN MENU

- Home
- Alarm
- Configuration
- History
- Service
- Manual
- Languages

## SETTINGS



## EVENTS

History	Events	2016.Dec.01	14:34:28	26°C
2016.12.01	14:28:52	Engine Trouble: INACTIVE	>	^
2016.12.01	14:28:23	Diesel Card Alarm Bell OFF	>	
2016.12.01	14:28:09	Engine Trouble: OCCURED	>	
2016.12.01	14:28:08	Engine Trouble: OCCURED	>	
2016.12.01	14:12:08	Underpressure: INACTIVE	>	
2016.12.01	14:11:22	Engine Fail to Start: INACTIVE	>	
2016.12.01	14:09:55	Alarms Reset	>	
2016.12.01	14:08:46	Diesel Card Alarm Bell ON	>	
2016.12.01	14:03:11	HOA in MANUAL Position	>	
2016.12.01	14:03:03	HOA in AUTO Position	>	v

## VIZITOUCH V2 MAJOR FEATURES INCLUDE:

- Touch screen operation with 7" color display and intuitive graphics
- Multi-language
- Upgradable software
- Password protected

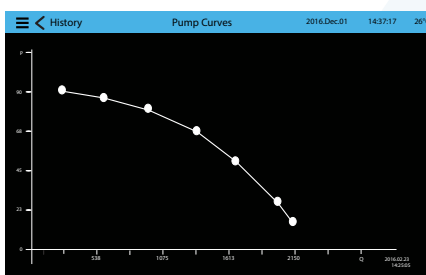
## HISTORY/STATISTICS

Statistics	Statistics	2016.Dec.01	14:34:28	26°C
First Service Statistics	First Service Statistics			
From				
Since	2016.12.01	14:28:09		
On Time		61:04:08:27		
Motor				
On Time		0:00:08:57		
Start Count		20		
Last Started On	2016.12.01	14:08:46		
Pressure				
Minimum		99.1 PSI	v	

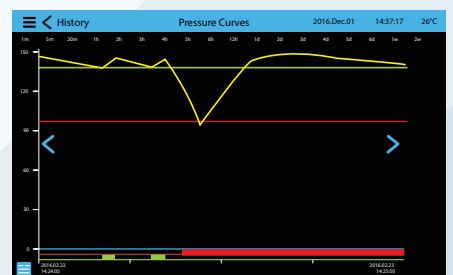
## SERVICE

Home	Service	2016.Dec.01	14:33:06	26°C
	Commissioning date	2016.12.01	14:28:52	
The Americas +1 514 334-0523 +1 800 363-8448 (Toll Free)	Last service date	2016.12.01	14:28:52	
Europe +32 (0) 10 84 40 01	Service interval	1 year		
Middle East +971 (0) 4 887 0635	Next service due	2016.12.01	14:28:52	
Asia +65 6796 8314				
Complete service				
Live view				
Nameplate Information				
Jockey pump cut-out		110		
Jockey pump cut-in		130		

## PUMP CURVES



## PRESSURE CURVES



MODEL GPD / WEIGHT & DIMENSIONS

Shipping Weight & Dimensions				
Starting Voltage	WALL MOUNT		FLOOR MOUNT	
	Approx. Dimensions in inches (mm)	Approx. Weight in Lbs (kg)	Approx. Dimensions in inches (mm)	Approx. Weight in Lbs (kg)
12 V.DC	27 " h x 27 " w x 9" d (700 x 600 x 228)	70 ( 32 )	47 " h x 27 " w x 9" d (1208 x 600 x 228)	95 ( 43 )
24 V.DC				

HOW TO ORDER: GPD / 12 OR 24 VDC / 120VAC OR 208 to 240VAC / Options

Ex.: GPD / 12 / 220 / B1, C7

AMERICAS  
Tornatech Inc.  
**Head Office**  
Laval, Quebec, Canada  
Tel: + 1 514 334 0523  
Toll free: + 1 800 363 8448

EUROPE  
Tornatech Europe SPRL  
Wavre, Belgium  
Tel: + 32 (0) 10 84 40 01

MIDDLE EAST  
Tornatech FZE  
Dubai, United Arab Emirates  
Tel: + 971 (0)4 887 0615

ASIA  
Tornatech Pte Ltd.  
Singapore  
Tel: + 65 6795 8114  
Tel: + 65 6795 7823

# GPX Series

## Full Service - Electric Fire Pump Controllers

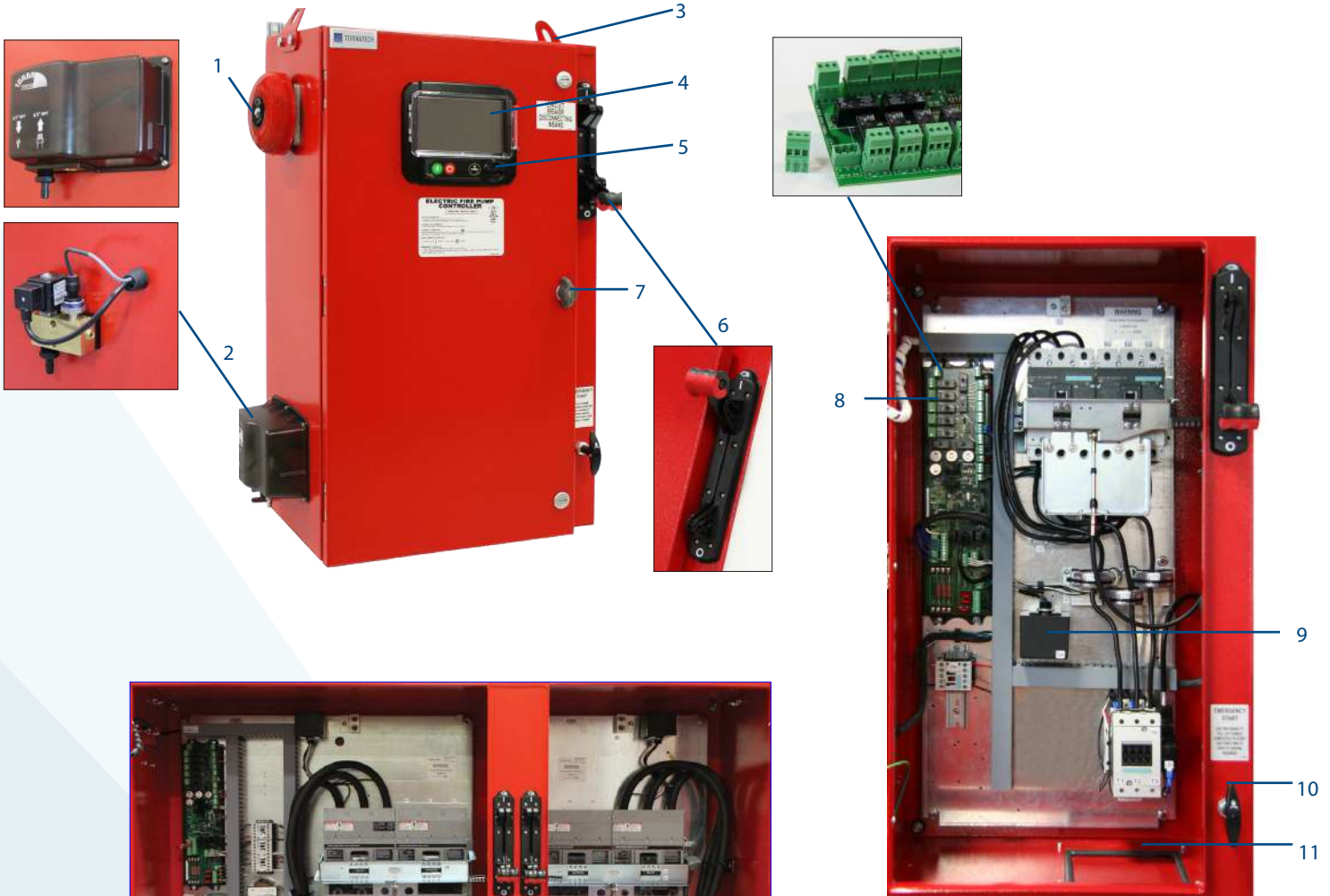
### Standard Features

- ViZiTouch V2 operator interface
- NEMA 2 assembly
- Pressure and event recorder
- Voltage and amperage display
- Single operator for both isolating switch and circuit breaker
- Surge arrestor
- Lifting lugs
- Run test push button
- Available with automatic power transfer switch
- Emergency start handle
- Start and stop pushbuttons
- Locked rotor protector
- Phase reversal indication
- Remote start / deluge valve start provision
- Pressure transducer and run test solenoid valve externally mounted
- Gland plate
- Audible alarm
- Alarm contacts for remote indication
- Available with full voltage and reduced voltage starting





1. Alarm bell
2. Externally mounted pressure transducer and run test solenoid valve with protective cover
3. Lifting Lugs
4. ViZiTouch V2 operator interface
5. Exterior USB Port
6. Custom designed Isolation switch / Circuit breaker operator handle
7. Key lock
8. Remote alarm contacts with removable terminals
9. Surge arrestor
10. Custom designed emergency start mechanism with integrated limit switch
11. Gland plate
12. Automatic power transfer switch



GPA MODEL SHOWN

GPW + GPU MODEL SHOWN

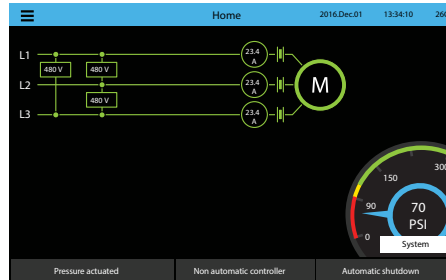


# ViZiTouch V2 Operator Interface

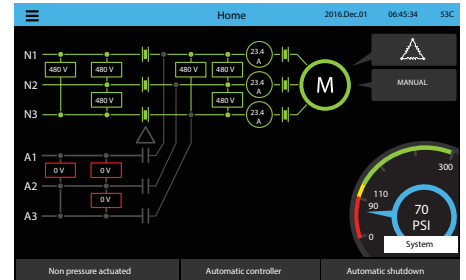


## HOME SCREEN

### Electric Fire Pump Controller



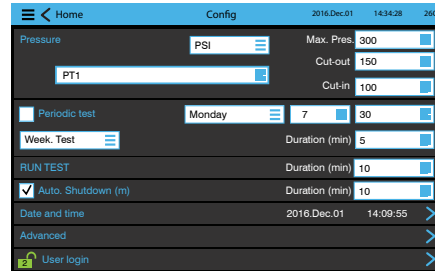
### Electric Fire Pump Controller with Automatic Transfer Switch



## ON-SCREEN MENU

- Home
- Alarm
- Configuration
- History
- Service
- Manual
- Languages

## SETTINGS



## EVENTS

Time	Event
2016.12.01 14:26:52	Under Voltage: ACTIVE
2016.12.01 14:28:23	Under Voltage: INACTIVE
2016.12.01 14:28:09	Alarms Reset
2016.12.01 14:28:08	ACB in OFF or Tripped: INACTIVE
2016.12.01 14:12:06	Alternate is Tripped/Open: INACTIVE
2016.12.01 14:11:22	Pump On Demand: INACTIVE
2016.12.01 14:09:55	Control Voltage not Healthy: ACTIVE
2016.12.01 14:08:46	Generator: Started
2016.12.01 14:03:11	Motor: Started in Automatic
2016.12.01 14:03:03	Loss of Power: ACTIVE

## HISTORY/STATISTICS

Category	From	To
First Service Statistics		
Since	2016.12.01	14:28:09
On Time		61-04-08:27
Motor		
On Time		0-00-08:57
Start Count		20
Last Started On	2016.12.01	14:08:46
Pressure		
Minimum		99.1 PSI

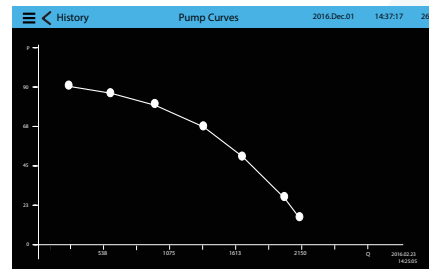
## SERVICE

Field	Value
Commissioning date	2016.12.01 14:28:52
Last service date	2016.12.01 14:28:52
Service interval	1 year
Next service due	2016.12.01 14:28:52
Jockey pump cut-out	110
Jockey pump cut-in	130

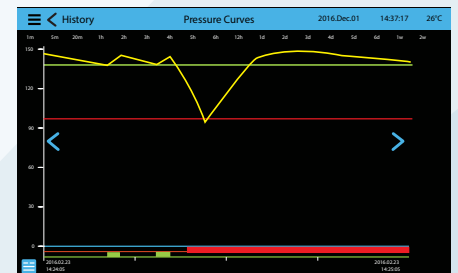
## VIZITOUCH V2 MAJOR FEATURES INCLUDE:

- Touch screen operation with 7" color display and intuitive graphics
- Multi-language
- Upgradable software
- Password protected

## PUMP CURVES



## PRESSURE CURVES



GPX SERIES / VOLTAGE / HP / SHORT CIRCUIT WITHSTAND RATING / SEISMIC CERTIFICATION

Model	Voltage	HP	Short Circuit Withstand Rating	Seismic Certified
GPA GPA+GPU	200V - 208V	5-150	100kA	Yes
		200	50kA	No
GPP GPP+GPU	220V - 240V	5-200	100kA	Yes
		250	50kA	No
GPP GPP+GPU	380V - 416V	5-300	100kA	Yes
		350-450	50kA	No
GPY GPY+GPU	440V - 480V	5-400	100kA	Yes
		450		No
		500	50kA	Yes
GPR GPR+GPU	200V - 208V	5-150	100kA	Yes
		200	50kA	No
GPR GPR+GPU	220V - 240V	5-200	100kA	Yes
		250	50kA	No
GPW GPW+GPU	380V - 416V	5-300	100kA	Yes
		350-450	50kA	No
GPW GPW+GPU	440V - 480V	5-400	100kA	Yes
		450		No
		500	50kA	Yes
GPW GPW+GPU	575V - 600V	5-500	50kA	Yes

Model	Voltage	HP	Short Circuit Withstand Rating	Seismic Certified
GPS GPS+GPU	200V - 208V	5-100	100kA	Yes
		150		No
GPS GPS+GPU	220V - 240V	200	50kA	No
		5-150	100kA	Yes
		200		No
GPS GPS+GPU	380V - 416V	250	50kA	No
		5-250	100kA	Yes
		300		No
GPS GPS+GPU	440V - 480V	350-450	50kA	No
		5-300	100kA	Yes
350	No			
400				
450				
GPS GPS+GPU	575V - 600V	500	50kA	Yes
		5-400		No
		450		
GPS GPS+GPU	575V - 600V	500	50kA	No

HOW TO ORDER: GPx - V / HP / Ph / Hz / Options

Ex.: GPA - 208 / 30 / 3 / 60 / Options

AMERICAS  
Tornatech Inc.  
Head Office  
Laval, Quebec, Canada  
Tel: + 1 514 334 0523  
Toll free: + 1 800 363 8448

EUROPE  
Tornatech Europe SPRL  
Wavre, Belgium  
Tel: + 32 (0) 10 84 40 01

MIDDLE EAST  
Tornatech FZE  
Dubai, United Arab Emirates  
Tel: + 971 (0)4 887 0615

ASIA  
Tornatech Pte Ltd.  
Singapore  
Tel: + 65 6795 8114  
Tel: + 65 6795 7823



# Model JP

## Jockey Pump Controller

Full voltage across the line starter  
 Solid State Controls with Digital  
 Operator Interface

### Standard Features

- Solid state controls with digital iPD+ operator interface
- All adjustments on door front
- Visual indicators
  - Manual motor run
  - Automatic motor run
  - System pressure
  - Automatic mode
  - Off mode
  - Motor overload
  - Pump start counter
  - Elapsed time meter (hours / non-resettable)
- Timers
  - Minimum run period timer
  - Sequential start timer
- Operators
  - OFF-AUTO pushbutton
  - Start and stop pushbuttons
- NEMA 2 enclosure
- Pressure transducer
- Fuseless magnetic motor starter



The model JP jockey pump controllers are specifically designed to control jockey pumps in order to maintain the desired water pressure in fire pump serviced systems. A jockey pump installation prevents unnecessary starting of the fire pump due to small leaks in the sprinkler system piping.

The model JP jockey pump controller is supplied with the front door mounted, solid state controls with digital iPD+ operator interface. The iPD+ allows the user to set and adjust all parameters required such as start and stop pressures, ON or OFF timers and units of measure (psi, bar, kPA, feet of head, meter of head) without having to open the controller door. The iPD+ also continuously displays the system pressure and the start and stop pressure settings. LED visual indications include manual motor run, automatic motor run, system pressure above stop pressure setting, system pressure in-between

start and stop pressure setting and system pressure below start pressure setting.

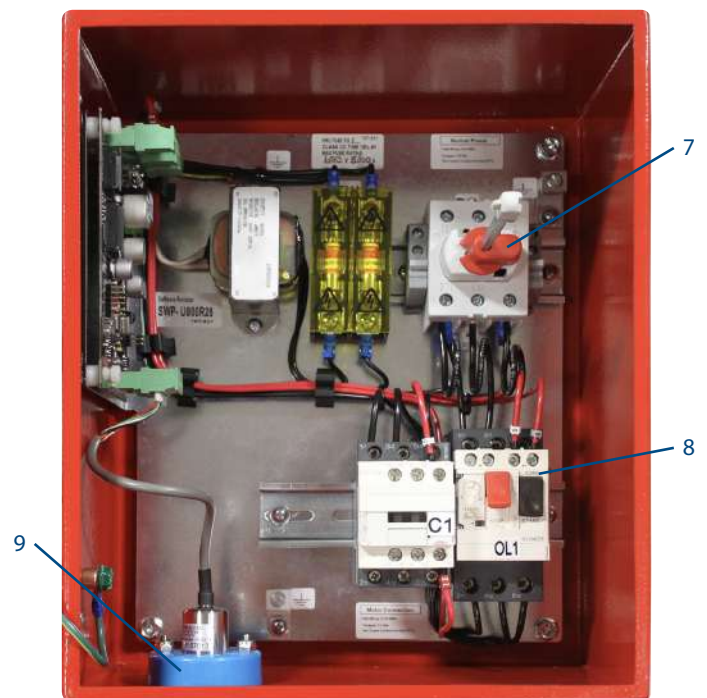
The standard power circuit consists of a horsepower rated disconnect switch, a thermo-magnetic motor protector and a motor contactor for across the line full voltage starting. Consult factory for other types of motor protection or starting methods available.

Individual models are specific to the voltage available on site:

- JP1: 120 V / Hp (kW) / single phase / 60Hz
- JP2: 220 to 240 V / Hp (kW) / single phase / 50 or 60Hz
- JP3: 208 to 600 V / Hp (kW) / three phase / 50 or 60Hz



1. High luminosity four digit digital display
2. System status diagnostic LED's for:
  - i. Green: system pressure at or above cut-out value
  - ii. Yellow: system pressure between cut-in and cut-out
  - iii. Red: system pressure at or below cut-in value
3. Motor run LEDs (manual start or automatic start)
4. Start and stop pushbuttons
5. Navigation keypad
6. OFF-AUTO position pushbutton and visual indication (LED)
7. Horsepower rated door interlocked rotary type disconnect switch
8. Fuseless magnetic motor starter with thermo-magnetic motor protector and horsepower rated contactor
9. Pressure transducer with 0-600psi range and stainless steel construction



HOW TO ORDER: JPx - V / HP / Ph / Hz / Options  
 Ex.: JP3 - 208 / 2 / 3 / 60 / Options

AMERICAS  
 Tornatech Inc.  
**Head Office**  
 Laval, Quebec, Canada  
 Tel: + 1 514 334 0523  
 Toll free: + 1 800 363 8448

EUROPE  
 Tornatech Europe SPRL  
 Wavre, Belgium  
 Tel: + 32 (0) 10 84 40 01

MIDDLE EAST  
 Tornatech FZE  
 Dubai, United Arab Emirates  
 Tel: + 971 (0)4 887 0615

ASIA  
 Tornatech Pte Ltd.  
 Singapore  
 Tel: + 65 6795 8114  
 Tel: + 65 6795 7823